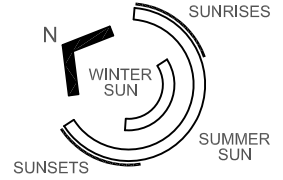


LEGEND

05/31/2024



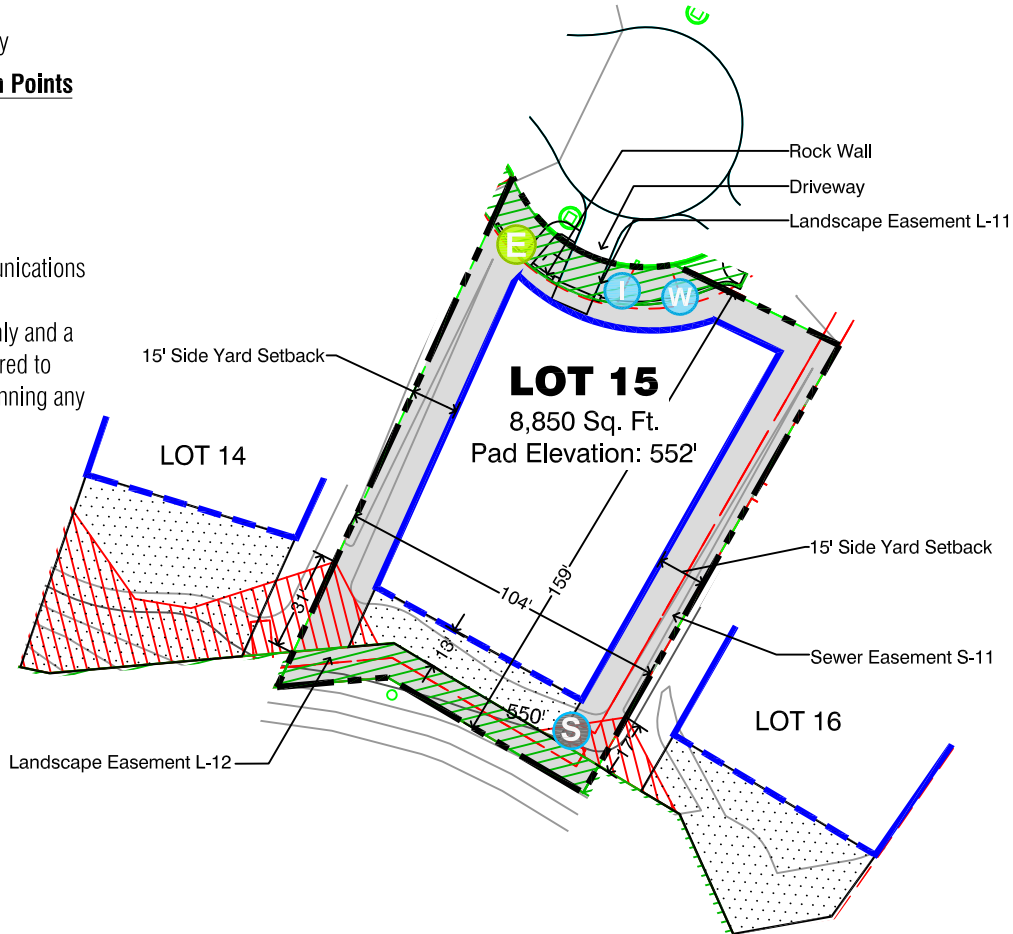
- Lot Boundary
- Buildable Area
- Limited Buildable Area
- Setback Areas
- Association Maintained Area
- Restricted Landscape Area (RLA)
- Building Setback
- Easement Boundary

**Utility Connection Points**

- Water (Irrigation)
- Water (Potable)
- Sewer
- Electrical / Communications

**Note:**

Grades shown are approximate only and a topographic survey shall be required to confirm finish grades before beginning any site planning or home design.



Hapuna Estates  
AT MAUNA KEA RESORT

**LOT 15** TMK 6-2-021:012  
LOT DIAGRAM  
Hapuna Estates at  
Mauna Kea Resort,  
Phase II



<b>Lot Area:</b> ± 16,901 Sq. Ft. (± 0.388 Ac.)
<b>Buildable Area:</b> ± 8,850 Sq. Ft. (± 0.203 Ac.)
<b>Limited Buildable Area:</b> ± 1,033 Sq. Ft.
<b>Pad Elevation:</b> ± 552 Ft.
<b>Permissible Lot Coverage (40%):</b> ± 6,754 Sq. Ft.
<b>Maximum Building Height Above Grade:</b> 30 Ft.

The Developer, AG-WP Mauna Kea Owner, L.L.C., and its agents make no representations regarding the need for, or the extent of, any required finish grading, fill and/or drainage improvements in connection with improvements to a Lot. The locations of any features, walls, trees, grades, setbacks, easements areas, zoning lines, buildable area, pad elevation and utilities depicted on this Lot Diagram are only approximations and are not intended to be and do not constitute any representations or warranty by the Developer or its agents. Prior to commencing construction on the Lot, Purchasers must verify on site and in the field the locations of any features, walls, trees, grades, setbacks, easement areas, zoning lines, the buildable area, the pad elevation and utilities, as well as the topography, the soil conditions, the drainage and the fill conditions. The Developer and its agents make no representations, assurances or warranties and shall have no liability with respect to the accuracy of information or other items referred to on this Lot Diagram. This Lot Diagram is informational only and does not constitute any commitment, representation or warranty with respect to the foregoing items. Further, the Developer disclaims that any representation, expressed or implied, has been made with respect to existing or future views, view planes or view corridors. For better scaling, this Lot Diagram should be printed on 8 1/2" x 11" paper.