

LOT 9

Lot Area: ± 1.101 Ac. ($\pm 47,969$ Sq. Ft.)

Buildable Area: ± 0.555 Ac. ($\pm 24,180$ Sq. Ft.)

Limited Buildable Area: $\pm 7,660$ Sq. Ft.

Pad Elevation: ± 517 Ft.

Permissible Lot Coverage (40%): $\pm 19,187$ Sq. Ft.

Maximum Building Height Above Grade: 22 Ft.

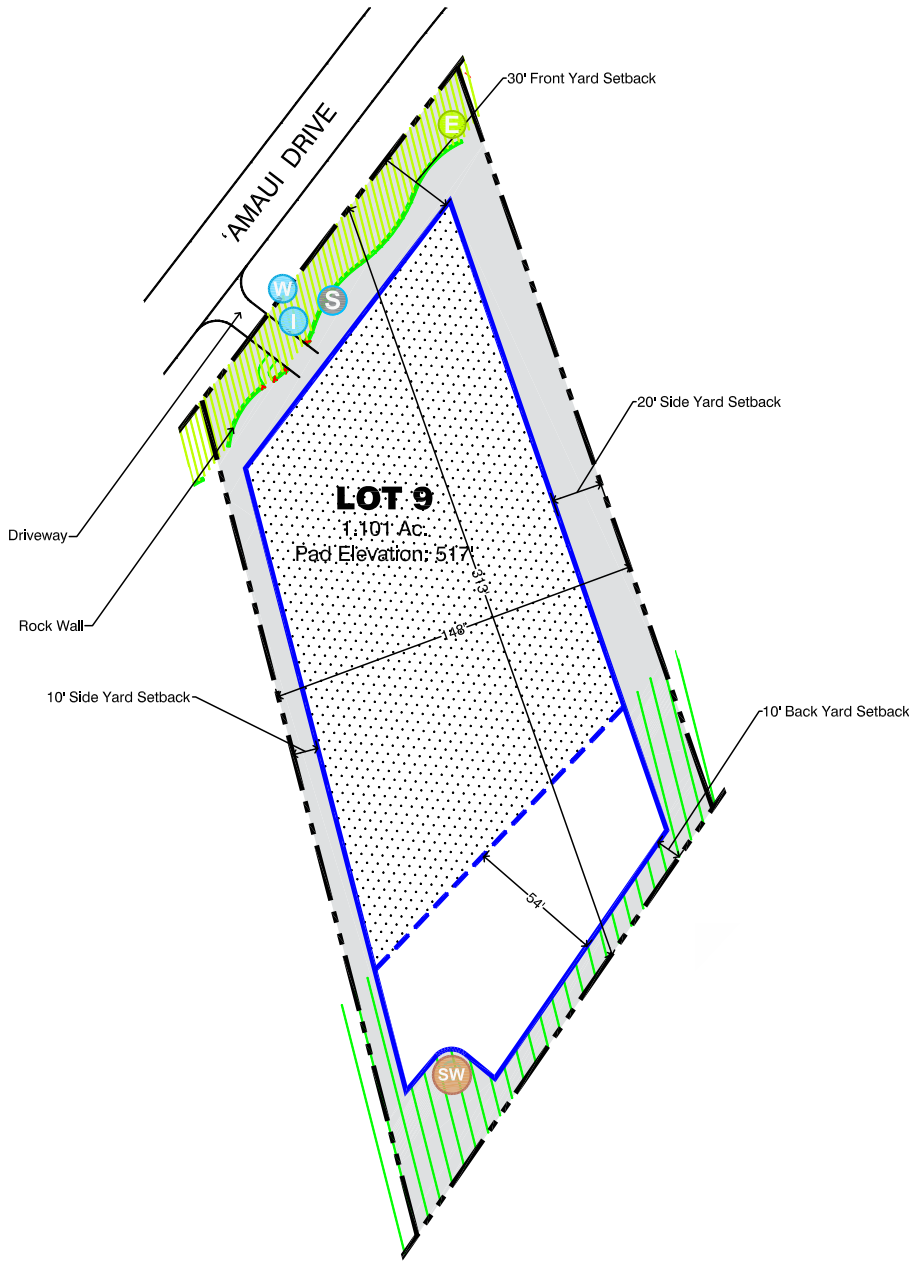
MaunaKeaLiving.com

LEGEND

	Lot Boundary
	Buildable Area
	Limited Buildable Area
	Setback Areas
	Restricted Landscape Area (RLA)
	Building Setback
	2nd-Story Setback (15')
	Association Maintained Area

Utility Connection Points

	Water (Irrigation)
	Water (Potable)
	Sewer
	Electrical / Communications
	Seepage Well



The Developer, AG-WP Mauna Kea Owner, L.L.C., and its agents make no representations regarding the need for, or the extent of, any required finish grading, fill and/or drainage improvements in connection with improvements to a Lot. The locations of any features, walls, trees, grades, setbacks, easements areas, zoning lines, buildable area, pad elevation and utilities depicted on this Lot Diagram are only approximations and are not intended to be and do not constitute any representations or warranty by the Developer or its agents. Prior to commencing construction on the Lot, Purchasers must verify on site and in the field the locations of any features, walls, trees, grades, setbacks, easement areas, zoning lines, the buildable area, the pad elevation and utilities, as well as the topography, the soil conditions, the drainage and the fill conditions. The Developer and its agents make no representations, assurances or warranties and shall have no liability with respect to the accuracy of information or other items referred to on this Lot Diagram. This Lot Diagram is informational only and does not constitute any commitment, representation or warranty with respect to the foregoing items. Further, the Developer disclaims that any representation, expressed or implied, has been made with respect to existing or future views, view planes or view corridors. For better scaling, this Lot Diagram should be printed on 8 1/2" x 11" paper.

